



New Enterprise Stone & Lime Co., Inc.

## Project Spotlight

### MasterFiber<sup>®</sup> MAC 360FF

#### Macrosynthetic Fiber

### Franklin County Judicial Center

#### **Location**

Chambersburg, PA

#### **Contractor**

Lobar Inc.

#### **Concrete Producer**

New Enterprise Stone & Lime Co., Inc.

#### **Concrete Volume**

1400 cubic yards

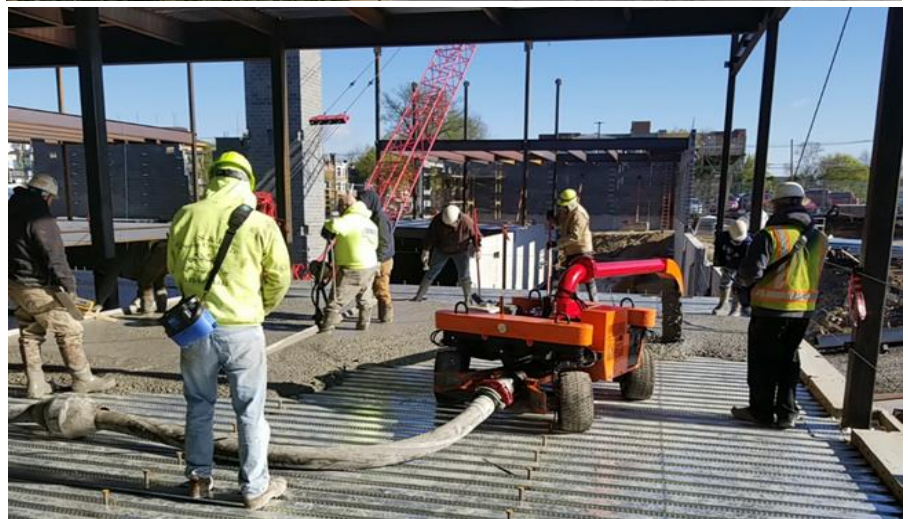
#### **Fiber Dosage**

4 lbs./cubic yd

#### **Application**

Slab on Deck

Working with the contractor, the specified mesh of 6x6-W1.4xW1.4 was replaced with 4 lbs./cy of macro fiber. This dosage met the minimum fiber requirements of the Steel Deck Institute.



**Altoona Sales Area - Adrian "Ace" Snyder – 814.330.2425**

**Harrisburg & Chambersburg Sales Area – Scott Eichelberger – 717.729.1816**

**Lancaster Sales Area – Darryl Keiser – 717.286.5894**

**Allentown Sales Area – Clint Renninger – 484.256.8343**